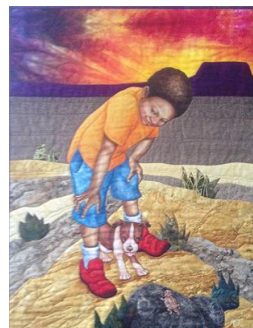




## Quarterly Meeting

August 20,

Join us for a great morning with quilt artist ,**Lura Schwarz Smith**. She will present a trunk show of her award winning quilts and speak on *“New Journeys of an Art Quilter”*. Her appearance at our meeting is the culmination of her two day workshop with Westside Quilters and we hope class participants will have great work to share.



## Designing Art Quilts Workshop with Lura Schwarz Smith August 18-19, 2016

Only two spaces left. Don't miss this chance or you will be on the waiting list. Sign up today. See p.2, column 2



## PRESIDENT'S MESSAGE

### Embrace Your Creative Spirit

This month I am focusing on the power of words. I have always kept a source book, which is similar to a sketch book, but can hold much more than just drawings and paintings. It is a place where I put anything and everything that I find inspiring; my printed photos, magazine collages, poetry, inspiring words, and quilting designs. Last year I found I was feeling



sluggish about filling my source book and found some inspiration in a book  
Called: No Excuses Art Journaling by Gina Rossi Armfield. She uses simple ideas like favorite words, colors, small drawings, and writing prompts to assist in finding ways to look for inspiration in unique and unexpected places. One of my favorite prompts is the monthly word. August's word is (you guessed it!) *embrace*. My exploration of the word *embrace* begins on August 1st when I take a quilting class at The Quilt Emporium in Woodland Hills with fellow guild member Marianne Simpson and a few other very talented quilt artists. The class is based on the *Moda* pattern "Spell it with Fabric". Using jelly roll strips and fat eighths and a folded corner clipper template, we will be constructing a quilt with 3-6 words of our choosing. I'm having a hard time choosing only six words. There're so many that I love!

I am looking forward to our Westside Quilters workshop with Lura Schwarz Smith on August 18-19th. I feel that we are so lucky to have a two day workshop where we really have time to explore and experiment with our creative ideas, guided by a dynamic teacher. I hope you're all looking forward to hearing Lura speak as our guest at the August 20th meeting.

As you know our ***Fabric Fundraiser*** is fast upon us! This is the perfect opportunity to start fresh and donate fabrics that are no longer inspiring you. So clean out your fabric stash and turn your "trash" into someone else's "treasure".

Happy Quilting!

Kim Ryan, President

## Lura Schwarz Smith

### August 18-19 workshop

***Only two spaces still available in the Lura Schwarz Smith Workshop. After those fill, there is still hope on the wait list. Sign up now***

In this special two-day workshop "Designing Art Quilts" learn successful tracing, shading and inking onto fabric, working from your own photographic paper prints (any subject matter). Using textile inks, markers, pencils, pastels and other materials, discover fun, easy design and drawing exercises to achieve realistic imagery in your quilts. You will explore design elements geared for the specific application of your individual projects, and you will create a master pattern from your own images.

Emphasis is on individual applications of techniques, and the fun of developing your own style. No prior art experience necessary, but those with an art background will learn specific applications for achieving beautiful imagery on fabric. All the information including the supply list is on the WQ website at <http://www.westsidequilterslosangeles.org/Calendar.html>.

Lura Schwarz Smith has a Bachelor of Arts degree in Art from San Francisco State University. As well as graphic and illustration art, she has been producing art quilts since 1975, originally showing in California galleries throughout the 70s and 80s. In the 90s she showed quilts and received awards at regional, national, and international quilt shows. . She has had one of her quilts named one of the "100 Best American Quilts of the 20th Century," and she was included in the "30 Distinguished Quilt Artists of the World" exhibit at the first Tokyo Dome quilt show in 2002 in Japan. In recent years, Lura has shifted her focus to art quilt venues, galleries and museums. Her work has been juried into many prestigious art quilt shows such as Quilt National, Quilt Visions, SAQA's Creative Force, Quilts=Art=Quilts, and other gallery and museum shows. Her work is in private collections across the country. She is a member of the Yosemite Western Artists, Sierra Mountain Quilters, and a juried artist member of Studio Art Quilt Associates. Learn more about Lura and see her work and resume' at [www.Lura-art.com](http://www.Lura-art.com).

### Workshop location:

**Parish Hall, St. Alban's Episcopal Church, 580 Hilgard Avenue, Los Angeles, CA 90024 2 Day**  
**Fee: \$135.00 \$150.00 for Non-members. \$15.00**  
supply fee due to Lura on the day of the workshop.



## REGISTRATION

First, please email your intent to attend a workshop to: [Programs@WestsideQuiltersLosAngeles.org](mailto:Programs@WestsideQuiltersLosAngeles.org) At the **WQ website**, choose *Calendar* and scroll down to individual workshops. See the link to the Workshop Registration Form (which you can fill in on-line and then print) and the supply list. **See the workshop no-refund policy (substitutions allowed) shown on the Workshop Registration Form.**

WQ will hold your space at the workshop for 14 days to allow time to mail Registration Form and payment to the WQ post office box. For last-minute registrations, contact the Program Chair ASAP. **Credit cards/debit cards now accepted.** Non-members pay a \$15.00 surcharge. Supply lists for all classes can be found on the Calendar page at [www.WestsideQuiltersLosAngeles.org](http://www.WestsideQuiltersLosAngeles.org). The class sessions are from 9 30am to 3:30pm.



## FABRIC EXTRAVAGANZA August 20 Meeting

At our August 20 meeting everyone is invited to this fundraiser. Hurrah. This year we are asking for fabric, books, and notions. If you want a pick-up for a big donation, please email Lisa or Aileen. [Ldrew007@aol.com](mailto:Ldrew007@aol.com) or [kudacooke@aol.com](mailto:kudacooke@aol.com)  
Plan on donating twice to the guild: bring fabric you aren't going to use and use cash when you can't resist another's donation. Feel good at clearing space in your sewing room and raising money for the guild. This really can help.

## September 17

### Sew-In and Potluck

Looking forward to being together at our favorite venue --ST ANDREW'S, for a day of sewing and in house demonstrations. Bring your projects and a salad to share. We will provide drinks and paper goods.

There will be demonstrations and sharing of techniques throughout the day. Maybe something will inspire you for a new project or philanthropy contribution

Registration will open at our August 20 meeting. The cost is \$20--just to cover the rent for the day.

This event is open to all--members and non members.

Looking forward to a day of learning and friendship.

Roberta Walley, Programs.

## General Meeting Agenda

**Saturday, August 20, 2016**

- 9:30 am     **Fabric Extravaganza** on the patio  
Registration  
Members pick up badges  
Sign up for Workshops. .  
List your Philanthropy projects, Show and Tell, Membership renewals  
Demonstration: WQ member , **Kathryn Pellman** will demo a fabric weaving technique using decorative stitching.
- 10:00 am     Guild Business and Announcements
- 10:20 am     Showcase with **Dorothy Miyake and Cindy Simon of Dollies Making a Difference**,  
[www.DolliesMakingADifference.org](http://www.DolliesMakingADifference.org)
- 10:35 am     Break
- 10:55am     Show and Tell
- 11:15am     Guest Speaker: **Lura Schwarz Smith, “New Journeys of an Art Quilter”**
- 12:15am     Adjournment



Meeting Location and Directions  
St John's Presbyterian Church, West Los Angeles  
11000 National Boulevard, Los Angeles, CA 90064

St John's is three blocks east of Sepulveda Blvd on the south side of the street, between Tilden and Military Ave (there is a traffic signal at Military Ave and National). Ample parking behind the church. Join us in the Fellowship Hall, to the west of the main church building.

## Calling all Quilters: Members' Showcase

Also, just a reminder for everyone who has participated in recent workshops to bring their completed projects to show in our Quilters' Showcase. We're especially looking forward to seeing some completed "Glam Clams" from the Latifah Saafir workshop in June. Maybe we'll also see some completed paper pieced Cactus Flower table runners and quilts from our workshop with Cindy Myers.

Sally Wright, Roberta Walley and Kathryn Pellman,  
Programs Co-Chairs

### Website:

Just a reminder to make sure that when you bring your quilts to show in our Quilters' Showcase, you sign up on the list at the Membership Table. Even your charity quilts if you show them and they get photographed! Remember to fill it out completely with the name and description of your quilt. Your Web Manager wants to be able to show your work and properly identify it!

Also make sure to take a look at your Membership Renewal letter. it contains the new password to the Members Only section of the WQ Website [www.westsidequilterslosangeles.org](http://www.westsidequilterslosangeles.org) which contains back issues of this newsletter and the WQ Membership Roster. Write it down and keep it in a safe place. The new password goes into effect on August 1.

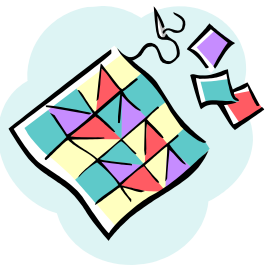
Sally Wright  
Web Manager

### Road to California call for volunteers

Road to California: If you didn't get all your desired classes please consider volunteering your time to qualify for priority registration. This allows you to register for all your classes up to 2 weeks prior to the opening of public registration. Go to [www.road2ca.com](http://www.road2ca.com) go to the volunteer page.

**The San Diego Museum of Art** exhibition: *Quilts and Color from the Museum of Fine Arts, Boston*, is a celebration of the vibrant color palette and inventive designs found in the outstanding array of early American quilts amassed over decades by the collectors Paul Pilgrim and Gerald Roy. Spanning the color spectrum, this exhibition of their collection of **45 quilts from the 19<sup>th</sup> and 20<sup>th</sup> centuries is now open**. These extraordinary displays of American craftsmanship are a must-see before September 5 . **More information at [SDMART.org](http://SDMART.org)**





# A NEIGHBORLY GUILD CALENDAR

<b>August 2016</b>	
<b>Westside Quilt Guild</b> <b>August 18-19</b>	<b>Lura Schwarz Smith</b> <b>Workshop: Designing Art Quilts</b>
<b>August 20</b> <b>Westside Quilters</b>	<b>GENERAL MEETING – Fabric Extravaganza</b>
<b>Santa Monica Quilt Guild</b> <b>August 10</b>	<b>Shawnee Miller</b> <b>Program: Thrilling Threads</b>
<b>September 2016</b>	
<b>Westside Quilt Guild</b> <b>September 17</b>	<b>Sew In Event 9:00-3:30</b> <b>St. Andrews Church</b> <b>Bring Machine</b>
<b>SFVQA</b> <b>September 11</b> <b>September 12</b>	<b>Amelie Belden</b> <b>Workshop: Mystery Quilt</b> <b>Program: Dresden Dance</b>
<b>Glendale Quilt Guild</b> <b>September 14</b> <b>September 17</b>	<b>Kathryn Pellman</b> <b>Program: Art Quilts Whimsical &amp; Traditional</b> <b>Workshop: Fashionistas</b>

See the Event Calendar of the Southern California Council of Quilt Guilds for additional events [www.sccqg.org](http://www.sccqg.org)

## OUT AND ABOUT

- ✂ LA Modern Quilt Guild meets on the first Monday of each Month at Sew Modern 10291 W. Pico Blvd., Los Angeles 90064
- ✂ 1<sup>st</sup> week of August – Quilters by the Sea, Long Beach
- ✂ August 13-14 LA Quilt Show Fiber Art Festival – Artists are invited to show their unique creations.
- ✂ August 31 – September 3 San Diego Quilt Show, San Diego Convention Center
- ✂ September Santa Barbara Coastal Quilters Guild Show, Earl Warren Showgrounds
- ✂ September 1-3 San Diego Quilt Show featuring Edyta Sitar, San Diego Convention Center
- ✂ September 4 – Mountain Treasures Quilt Show, Big Bear, CA
- ✂ September 10 – Quilters Etc Quilt Show, Lompoc, CA
- ✂ September 18 – Simi Valley Quilt Guild Show, Yesterday, Today, Tomorrow (Not your randmother's Quilts), Simi Valley Rancho Susana Recreation Center

## ***Treasurer's Report***

<b>Opening Balance June 24, 2016</b>		<b>\$7,315.19</b>
INCOME		
Membership Dues	\$225.00	
Workshop Fees for Schwarz Smith	1,675.00	
Donations	25.00	
Amazon fees	21.92	
<b>TOTAL INCOME</b>		<b>\$1,946.92</b>
EXPENSE		
Government fees	\$20.00	
Annual Post Office Box Rental	130.00	
Credit Card fees	17.74	
Workshop Expense	10.00	
Return of Culver City room deposit from July 2015	-300.00	
<b>TOTAL EXPENSE</b>		<b>-122.26</b>
<b>Closing Balance July 26, 2016</b>		<b>\$9,384.37</b>

This month's report includes income from next month's workshop but no expenses for that event. Those expenses will be part of the August report.

Patti Post  
Treasurer

## MEMBERSHIP

IT'S NOT TOO LATE TO RENEW! Our Membership Renewal drive is in full force. Around 60 members have turned in their renewal forms and we welcome new member, **Aleksandra Needles**. For those of you who have renewed for 2016-17 you should have received your welcome letter with your membership card and a supply of referral cards. It will contain the new username and password for entry into the Members Only area of the WQ website where you will find a current Membership Roster and past newsletters. Put the log-in info in a safe place for future use and keep the new referral cards in your wallet so you can give them to friends or acquaintances who might be interested in Westside Quilters. The card allows an individual to attend a quarterly meetings once at no charge and we would love to have many new members. Just a reminder - the 2016-17 renewal period ends July 31st. At that time your name will removed from the roster if you have not renewed, though you can always be re-added later. Take a moment to download a Membership Form from the website and mail it in to the PO Box today or bring it to the August meeting to continue enjoying all Westside Quilters events. You don't want to miss any of the exciting workshops or programs coming up during the next year.

Karynn Dittmar, Membership Chair

## AUGUST BIRTHDAYS

Nikki Schenck 8/1

Carol Takemoto 8/6

Betty Seinfeld 8/15

Annette Levey 8/15

MaryAnn Sereth 8/16

Brenda Gottfried 8/18

Stephanie Wexler 8/25





## MEMBER SPOTLIGHT

### Sandra Lauterbach

And at the Textile Museum in Washington, D.C. through September 5, 2016, Sandra has her quilt, "Wailing wall of Krakow"

## PHILANTHROPY

UPDATE:

The Philanthropy committee is working on the November project day. Cindy Simon and Dorothy Miyake will be with us as the showcase speakers at the August General meeting to share the work of their group, *Dollies Making A Difference*. Two of the groups supported by "Dollies" are: Foster Care Counts and Wounded Heroes of America. We're excited that Westside Quilters will be working with Cindy and Dorothy this next year and are looking forward to learning more.

If you have kid/baby quilts or quilts for Wounded Warriors that are completed, please bring them to the meeting. Though our main focus will be the *Dollies Making A Difference* this year the Guild is still involved with continuing support for these two on-going projects.

The committee is still accepting survey/questionnaires... if you still have your copy. We love the feedback and the wonderful ideas that have been included in your responses.

Hilary Smith   Carol Kapp   Suzanne Woods



June 2016 – St. Joseph's Center, Venice, California

Our Secretary, Sally Madigan is caught up with publishing minutes but will return next month with the August Board Meeting minutes. In the September newsletter, the minutes of the Quarterly Meeting will appear.

## ***Next Executive Board Meeting***

The next meeting of the Executive Board will be held August 6, 2016

All members of Westside Quilters are welcome to attend with prior notice to  
[Pres@WestsideQuiltersLosAngeles.org](mailto:Pres@WestsideQuiltersLosAngeles.org).

### *Our Mission*

A new kind of guild organized for educational and charitable purposes; to promote cooperation and the exchange of ideas among quilters; to instruct members in methods and techniques of traditional and contemporary creative quilting; to serve mini-groups and their philanthropic endeavors within the community; to inspire personal achievement.

### Officers 2016-2017

President	Kim Ryan
Vice President	Debbie Nussbaum
Secretary	Sally Madigan
Treasurer	Patti Post
Program	Sally Wright, Roberta Walley, Kathryn Pellman
Membership	Karynn Dittmar
Newsletter	Aileen Cooke, Luann Jaffe
Philanthropy	Sue Woods, Carol Kapuscinski, Hilary Smith
Website Manager	Sally Wright

### Appointed Positions

Hospitality	Bobbi Leung
Meeting Set-Up/Take-Down	Stephanie Wexler
Photographer	Tanya Heldman
President Emeritus	Perla Rothenberg

Mailing Address                      Post Office Box 641925  
Los Angeles, CA 90064

### Website

[www.WestsideQuiltersLosAngeles.org](http://www.WestsideQuiltersLosAngeles.org)

Facebook    We're on Facebook. Check out the banner on the WQ website home page (lower center).

Amazon    There is a boxed message in the lower center of our website home page giving a direct link to Amazon. By using this link, anything you purchase earns a 4% "dividend" paid directly to WQ. *This only works if you enter the Amazon website from the WQ website link.*

iGive.com    This is another way to benefit WQ when shopping on the Internet. Here you need to register (the iGive.com logo appears in the lower center on the WQ website home page and links you directly to iGive.com). More than 800 Internet retailers participate (Barnes & Noble, Bed Bath & Beyond, Enterprise Rent-A-Car, Lancome -- to name a few). Follow the instructions at iGive.com.

Non-Profit Status    Westside Quilters is tax-exempt from Federal income tax under section 501(c)(3) of the Internal Revenue Code, and classified as a public charity under section 170 of the Code, according to the determination letter dated May 26, 2011 received from the Internal Revenue Service. The effective date of exemption is June 17, 2010. Donations to Westside Quilters are fully tax-deductible for individuals and other entities such as corporations, partnerships, trusts; Westside Quilters is qualified to accept tax deductible bequests and gifts or transfers of gifts.

F.E.I.N.    27-3145733  
(Federal Employer Identification Number)